



Raytec Manufacturing

Raytec LLC 544 Gristmill Road, Ephrata, PA 17522

Phone (717) 445-0510
Toll-Free (877) 800-2500
Fax (717) 445-0511

Instructions for Assembling the Caf-Cart

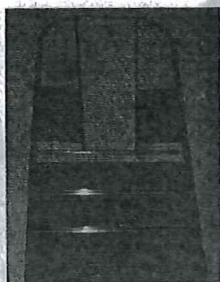
Tools Required

- 2- 7/16" wrenches
- 2- 1/2" wrenches
- 1- Flathead screwdriver
- 1- Pliers

Parts:



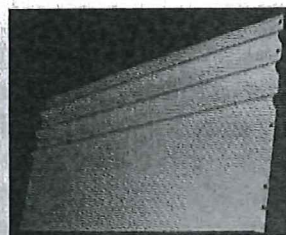
1- Green Back Frame



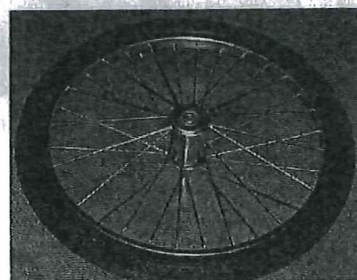
1- Green Front Frame



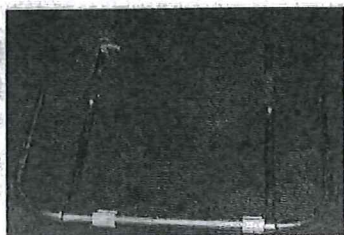
1- plywood floor



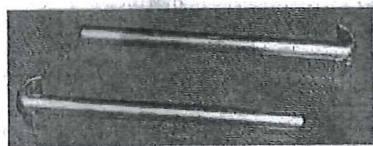
2- Lower Side Panel



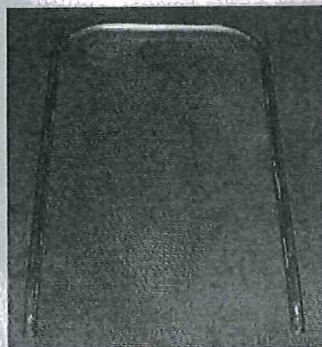
2 Wheels



1- Tube Axle Frame Assembly



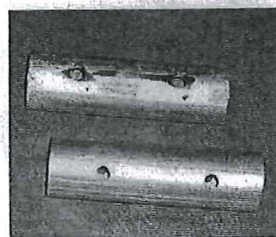
2- Axles



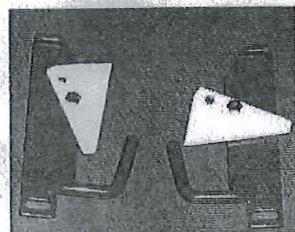
1- Tube Handle Frame



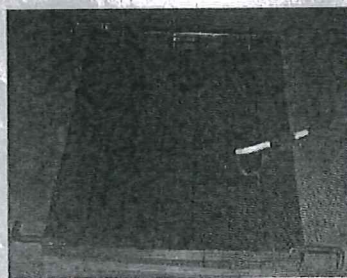
2- Upper Side Panel



2- Connecting Sleeves



2-Handle Latches



1- Door



1- Lower Door Hinge

1- Bolt Pack

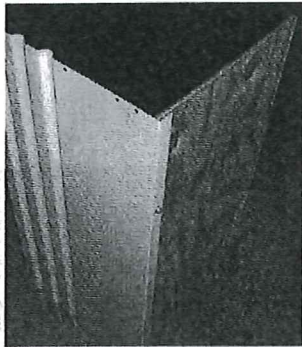


Raytec LLC 544 Gristmill Road, Ephrata, PA 17522

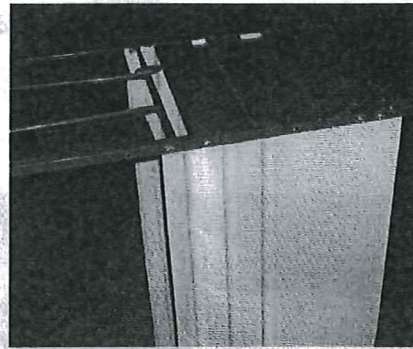
Phone (717) 445-0510
Toll-Free (877) 800-2500
Fax (717) 445-0511

Steps

1. Attach the floor panel to the lips of both lower side panels with four $\frac{1}{4}$ x 1" carriage bolts (bolt head goes inside of the cart) lock washers and nuts.



Step 1



Step 2

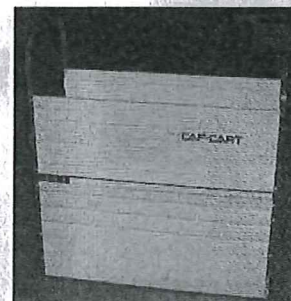
2. Attach the green front frame with yoke rods to lower panels using $\frac{1}{4}$ x $\frac{5}{8}$ " machine bolts (bolt head goes outside of the frame) lock washers and nuts. Do NOT tighten bolts until step #4 is complete.

3. Assemble green rear door frame in the same manner. Put the door in position and attach the lower door hinge.



Step 3

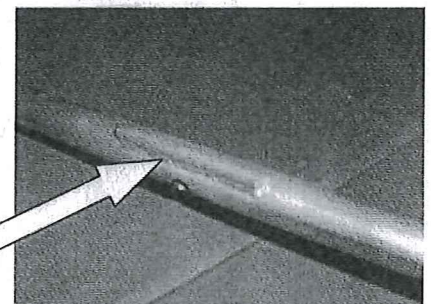
Lower Door hinge



Step 4

4. Bolt the upper side panels in place. Tighten ALL BOLTS.

5. Assemble handle tube frame to axle frame assembly using the connecting sleeves and four $\frac{1}{4}$ x $1\frac{1}{2}$ " stove bolts with lock washers and nuts. Support rod over the axle hole is on the top. Be sure that the handle is inserted bending upwards.



Support rod on top.

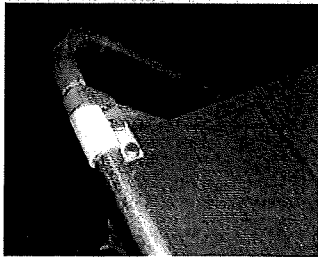


Raytec Manufacturing

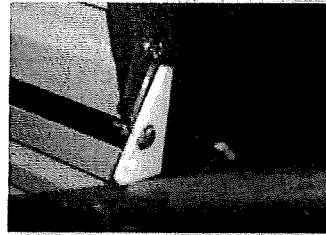
Raytec LLC 544 Gristmill Road, Ephrata, PA 17522

Phone (717) 445-0510
Toll-Free (877) 800-2500
Fax (717) 445-0511

6. Mount the tube frame assembly to the box. Use the four 5/16 " x 1/2" machine bolts and lock washers to mount the bushing plates to the lower portion of the front yoke end. Be sure bushing plates are turned upward when mounting. Bolts will be above the tube in front of Caf-Cart when mounted.



Step 6



Step 8

7. Put wheels in axle tube frame assembly and slide axles in from the outside. Use the cotter keys to lock the axles.

8. Fasten left and right latches to rear door frame with hooks outside using four 1/4" x 5/8" machine bolts and lock washers. Adjust alignment so that the handle hooks neatly.

9. If Equipped, Install Head-Lok in the same fashion it is mounted on the cardboard. Mount bottom of gate rod with 5/16" machine bolt from inside to outside. Put flat washer between gate and rod mounting bracket. Mount gate rod with chain catch on right (points up). Put end of chain between frame and guide. The first link should be coming away from the mounting point at down and to the right (about 4:00).

10. If tires are air-filled, inflate to 40 psi.

FinnLacto Oy
Tuottajantie 57
PL 343
60101 SEINÄJOKI
Puh. (06) 4210 300
Fax. (06) 4210 333